

DS-3E2552-HI-48T4F
48 GE RJ45, 4 GE SFP, Smart L2+ Switch

DS-3E2500-HI series Ethernet switch is the new generation of Gigabit speed managed switch with high performance that is specially developed for SMB (Small Business) market. It supports Intelligent Resilient Framework stacking and provides abundant security access policies and enhanced network manageability and maintenance. This makes it ideal for diversified network building scenarios, including government, small and medium-sized enterprises, schools, and hotels.

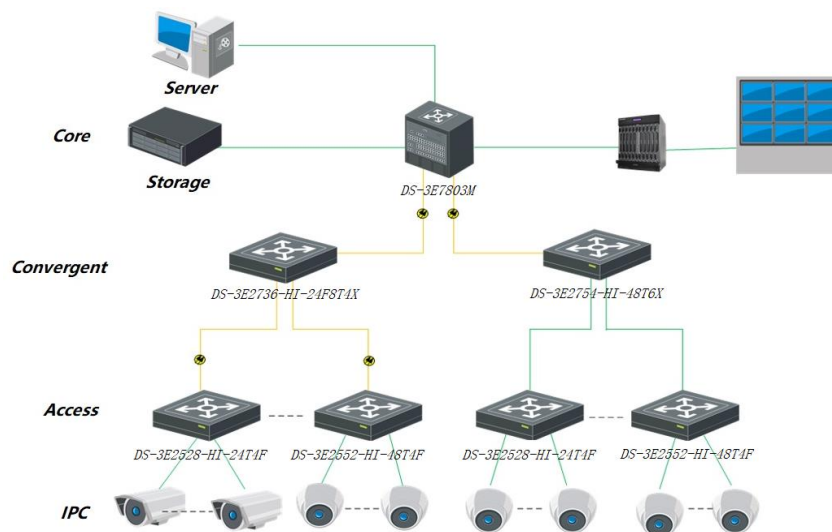
- DS-3E2500-HI series supports the combination of "Ethernet port + optical port" to meet networking requirements of various scenarios, which is convenient for users to build a flexible network. It offers 24-port, and 48-port access and all ports support Gigabit wire speed forwarding capabilities to meet users' needs.
- The virtualization technology allows each slave device in the stack to serve as the backup of the master, creating control and data link redundancy, as well as uninterrupted layer-3 forwarding. This improves the reliability, avoids unplanned business downtime and serves to improve overall performance. When the master device fails, traffic remains uninterrupted.
- Support ARP Detection, which can prevent hackers or attackers from implementing "ARP spoofing attacks" through ARP packets. Support IP Source Guard, which can prevent illegal address spoofing including MAC spoofing, IP spoofing, MAC/IP spoofing, and DoS attacks. Support DHCP Snooping, which can prevent private DHCP servers and ensure the authenticity and consistency of the DHCP environment. Support port security features, which can prevent MAC address-based attacks and realize traffic permit/limit based on a MAC address.
- Support speed limit on port and traffic to prevent malicious invasion of network bandwidth and provide multiple granular management tools. Support SP (Strict Priority), WRR (Weighted Round Robin), and SP+WRR queue scheduling algorithms, and support multi-priority data transmission. Support rich IPv6 services and multiple IPv6 management tools.
- Support CLI command line, Web network management, and Telnet, making device management more convenient. And support SSH2.0 and other encryption methods, making management more secure. Support remote upgrade of devices through FTP and TFTP, SNMP v1/v2c/v3
- Energy-saving design greatly reduces device power consumption and trouble spots. Radiation is reduced to reach the standard for household electrical appliances and is harmless to humans.

▪ Specification

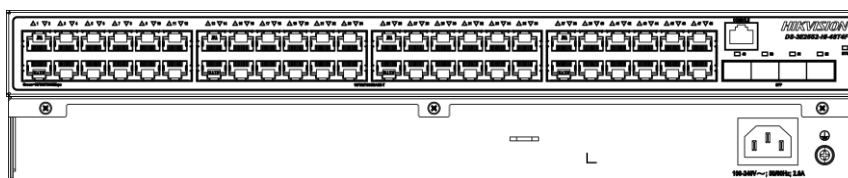
Model		DS-3E2552-HI-48T4F
General	Shell	Metal
	Net Weight	3.10 kg (6.84 lb)
	Gross Weight	4.70 kg (10.36 lb)
	Dimensions (W × H × D)	440.00 mm × 260.00 mm × 43.60 mm (17.32" × 10.23" × 1.71")
	Operating Temperature	-5 °C to 45 °C (23 °F to 113 °F)
	Storage Temperature	-40 °C to 70 °C (-40 °F to 158 °F)
	Operating Humidity	10% to 95% (no condensation)
	Relative Humidity	5% to 95% (no condensation)
	Power Supply	AC: 100 V~240 V AC, 50/60 Hz
	Installation Mode	Rack (equipped with mounting ears)
	Max. Power Consumption	39 W
	Power Consumption in Idle	28 W
	Surge Protection	6 kV
Network Parameters	Ports	48 × Gigabit RJ45 port, 4 × Gigabit fiber optical port
	MAC Address Table	16 K
	Switching Capacity	Whole-Device Performance: 104 Gbps Port Performance: 104 Gbps
	Packet Forwarding Rate	Whole-Device Performance: 77.38 Mpps Port Performance: 77.38 Mpps
	Internal Cache	1.5 Mbits
Software Function	Ethernet	LLDP Static MAC configuration Limit of number of MAC addresses to be learned (up to 16K) Port mirroring and traffic mirroring Port aggregation (up to 24 groups and 8 ports for each group) Port isolation STP/RSTP/MSTP IEEE 802.3ad (dynamic link aggregation) and static port aggregation
	VLAN	802.1Q (up to 4K VLAN) Protocol-based VLAN MAC-based VLAN GUEST VLAN VLAN mapping MVRP

	IP Routing	Static routing RIP/OSPF
	DHCP	DHCP Relay DHCP Client DHCP Snooping
	Multicast	IGMP V1/V2/V3 snooping PIM Snooping Multicast VLAN IPv6 multicast setting
	QoS	SP/WRR/SP+WRR queue scheduling 802.1p and DSCP priority mapping Port speed limit
	ACL	ACL on Layer 2, Layer 3 and Layer 4 IPv4 and IPv6 ACLs VLAN ACL
	Security	Hierarchical user management and password protection SSH for a secure encrypted channel for user login Specific IP address based FTP logging and password mechanism Prevent attacks from ARP, unknown multicast packet, broadcast packet, unknown unicast packet, TTL=1 packet, and protocol packet MAC address limit IP+MAC+PORT binding IEEE 802.1x Radius and AAA SNMPv3 Broadcast suppression
	System Management	Command line configuration via console/AUX Modem/Telnet/SSH Uploading and downloading of FTP, TFTP, and Xmodem, and SFTP files SNMP V1/V2c/V3 sFlow NQA NTP clock System operating logs
	IPv6	IPv6 static routing and dual-stack DHCPv6 Client and DHCPv6 Snooping ND and PMTU IPv6 Ping, IPv6 Telnet, IPv6 SSHv2, and IPv6 domain name resolution
	Reliability	Hot patch, in-service patch upgrade
	HPP	Support one-click activation and remote management via Hik-Partner Pro. Functions supported: 1. Display the port rate. 2. Display the port bandwidth utilization rate. 3. Display topology information. 4. Display the alarm status. 5. Restart ports and devices. 6. Remotely upgrade the device.
Approval	EMC	CE-EMC (EN 55032: 2015+A11: 2020, EN IEC 61000-3-2: 2019, EN 61000-3-3: 2013+A1: 2019, EN 50130-4: 2011+A1: 2014, EN 55035: 2017+A11: 2020)
	Safety	CB (AMD1:2009, AMD2:2013, IEC 62368-1: 2014 (Second Edition))
	Chemistry	CE-RoHS (2011/65/EU),WEEE (2012/19/EU),Reach (Regulation (EC) No.1907/2006)

▪ **Typical Application**



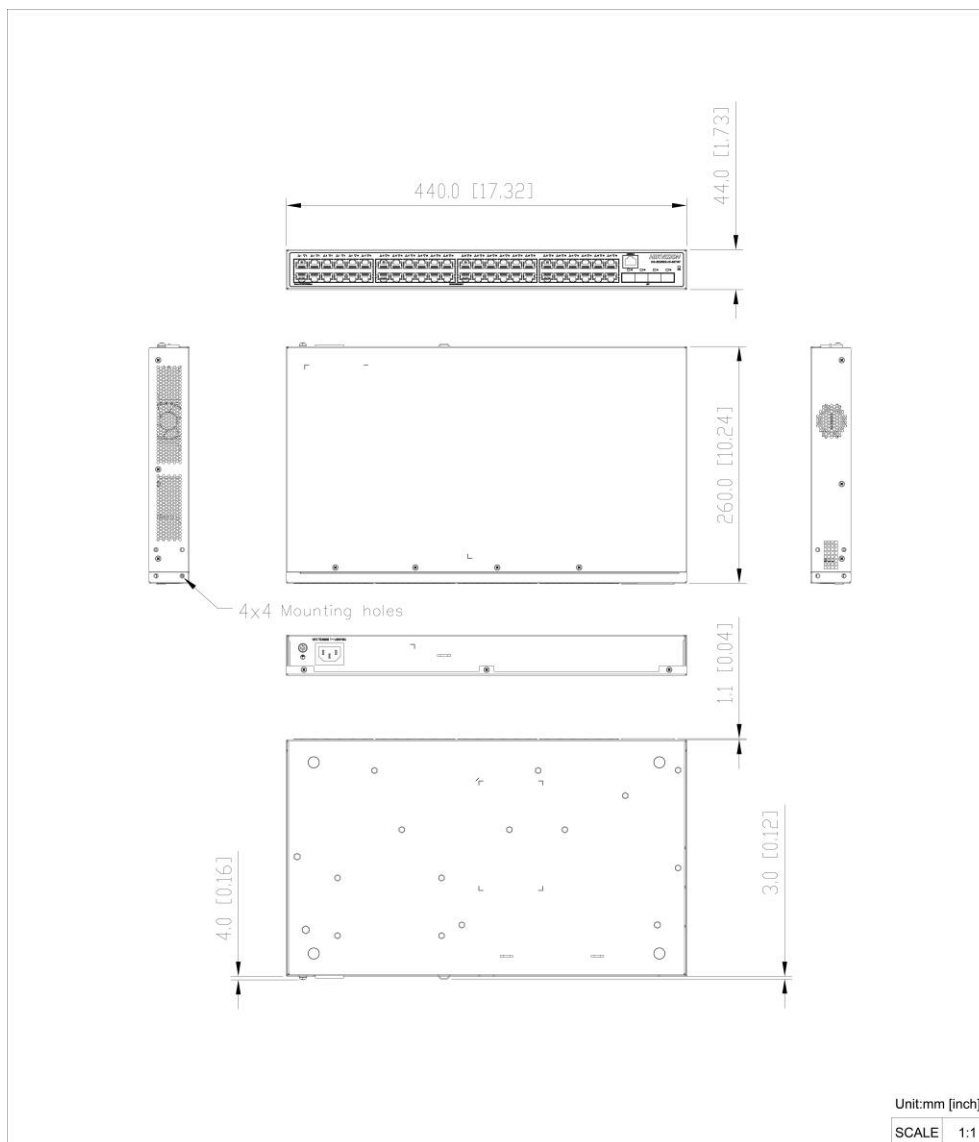
▪ **Physical Interface**



▪ **Available Model**

DS-3E2552-HI-48T4F

▪ **Dimension**



Headquarters

No.555 Qianmo Road, Binjiang District,
Hangzhou 310051, China
T +86-571-8807-5998
www.hikvision.com



Follow us on social media to get the latest product and solution information.

