

## DS-3E3700-H Series



### Product overview

DS-3E3700-H Series is the latest development of Gigabit speed Layer 3 Ethernet switch. This powerful and highly secure switch series is built based on industry-leading high performance hardware architecture. It supports diversified services, high capacity GE access port as well as high density 10GE uplink, which meet the requirements for high density campus access and high performance aggregation.

### Ordering Information

| Product ID   | Product Description  |
|--------------|--|
| DS-3E3728-H  | 24×10/100/1000BASE-T ports (including 8×combo interfaces), 4×10G/1G BASE-X SFP+ ports, 1×expansion slot, 2×fan tray slots, and 2×power module slots. |
| DS-3E3728F-H | 24×SFP ports (including 8×combo interfaces), 4×10G/1G BASE-X SFP+ ports, 1×expansion slot, 2×fan tray slots, and 2×power module slots.               |
| DS-3E3752-H  | 48×10/100/1000BASE-T ports, 4×10G/1G BASE-X SFP+ ports, 1×expansion slot, 2×fan tray slots, and 2×power module slots.                                |

### Module information

| Product                                      | Module information  |
|--|---|
| DS-3E3728-H/<br>DS-3E3728F-H/<br>DS-3E3752-H | Input voltage: 100V~240V AC、50/60Hz; - 48V~ - 60V DC<br>Module : 150W AC Power Module; 150W DC Power Module |

## Features and benefits

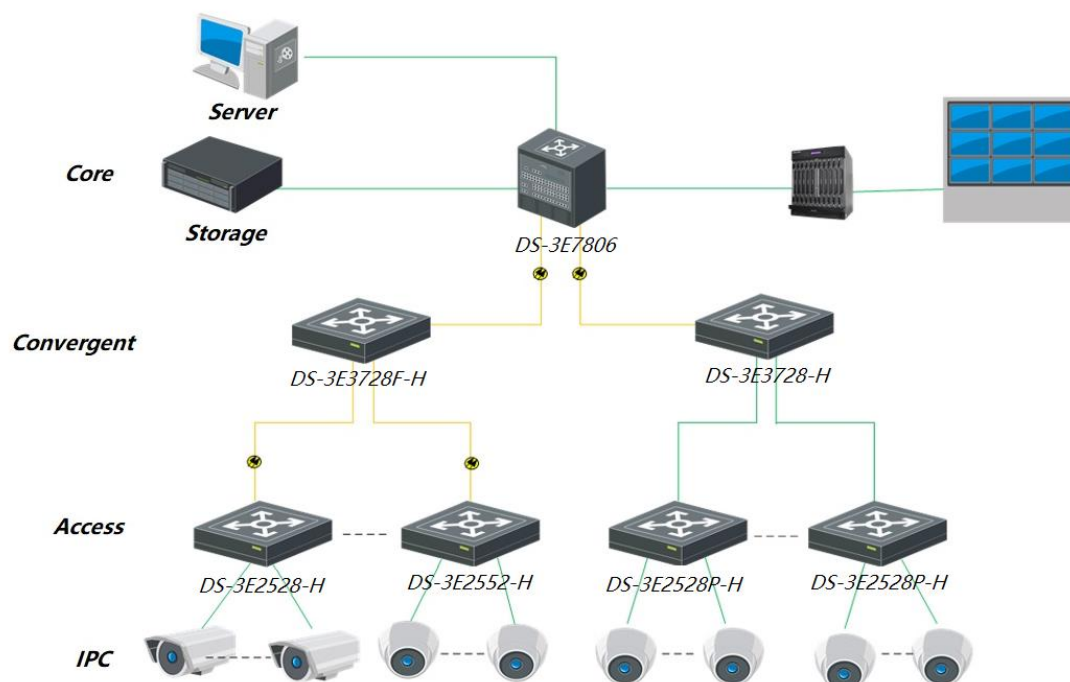
- DS-3E3700-H Series provide 24 or 48 Giga and 4 fixed 10GE ports onboard with one expansion slot. The high port density satisfy the requirements for hybrid configuration of copper ports and fiber ports at the distribution layer in large sized networks or at the core layer in SMB sized networks.
- DS-3E3700-H Series comes with IPv4/IPv6 dual-stack platform which provides sophisticated IPv4/IPv6 solutions by supporting multiple tunnels, IPv4/IPv6 Layer 3 routing protocols, multicasting, and policy-based routing.
- The virtualization technology allows each slave device in the stack to serve as the backup of the master, creating control and data link redundancy, as well as uninterrupted layer-3 forwarding. This improves the reliability, avoids unplanned business downtime and serves to improve overall performance. When the master device fails, traffic remains uninterrupted.
- The switch supports unified MAC address authentication, 802.1x authentication, and portal authentication; dynamic or static binding of user identifiers such as user account, IP address, MAC address, VLAN, and port number; and dynamic application of user profiles or policies (such as VLAN, QoS, and ACL) on users.
- The switch supports Unicast Reverse Path Forwarding (uRPF), which protects a network against source spoofing attacks, preventing DoS and DDoS attacks.
- The DS-3E3700-H switch series adopts hot swappable dual-power supply, which allows you to configure AC or DC power supplies as needed. The switch can detect faults in power supplies, and will if any such faults are found, respond with an alarm. It can automatically adjust fan speed according to the temperature.
- Apart from device level redundancy, the DS-3E3700-H series switch also provides diverse link redundancy support such as LACP/STP/RSTP/MSTP/Smart Link protocols. It supports virtualization redundancy backup as well as cross-device link aggregation which substantially increases network reliability.
- The DS-3E3700-H switch series supports packet filtering at L2( Layer 2 )~L4( Layer 4 ), and traffic classification based on source MAC addresses, destination MAC addresses, source IP addresses, destination IP addresses, TCP/UDP port numbers, protocol types, and VLANs. It supports flexible queue scheduling algorithms based on ports and queues, including strict priority (SP), weighted round Robin (WRR), SP+WRR and WDRR. The S5560X-EI switch series enables committed access rate (CAR) with the minimum granularity of 8 kbps. It supports port mirroring in the outbound and inbound directions, to monitor the packets on the specific ports, and to mirror the packets to the monitor port for network detection and troubleshooting.

## Specifications

| Item                                   | DS-3E3728-H  | DS-3E3728F-H   | DS-3E3752-H  |
|--|--|--|--|
| Service ports                          | 24×10/100/1000BASE-T ports (including 8×combo interfaces), 4×10G/1G BASE-X SFP+ ports          | 24×SFP ports (including 8×combo interfaces), 4×10G/1G BASE-X SFP+ ports                            | 48×10/100/1000BASE-T ports, 4×10G/1G BASE-X SFP+ ports   |
| Switching capacity                     | 288Gbps  | 288Gbps  | 336Gbps  |
| Packet forwarding rate                 | 216 Mpps   | 216 Mpps   | 252 Mpps   |
| Dimensions (W×D×H) ( mm )              | 440×360×43.6   | 440×360×43.6   | 440×360×43.6   |
| Input voltage                          | AC : 100V ~ 240V AC , 50/60Hz DC : -48V ~ -60V DC  |  |  |
| Power consumption (full configuration) | Single AC input: 87 W<br>Dual AC inputs: 91 W<br>Single DC input: 88 W<br>Dual DC inputs: 95 W | Single AC input: 112 W<br>Dual AC inputs: 116 W<br>Single DC input: 113 W<br>Dual DC inputs: 122 W | Single AC input: 88 W<br>Dual AC inputs: 93 W<br>Single DC input: 89 W<br>Dual DC inputs: 96 W |
| Weight                                 | ≤6.7 kg  | ≤6.6 kg  | ≤7.0 kg  |
| Operating temperature                  | 0°C to 45°C (32°F to 113°F)  |  |  |
| Operating humidity                     | 5% RH to 95% RH, non-condensing  |  |  |

|                               |  |
|-------------------------------|--|
| Layer 2 ring network protocol | STP/RSTP/MSTP  |
| VLAN                          | Port-based VLAN<br>MAC-based VLAN<br>Protocol-based VLAN<br>QinQ and selective QinQ  |
| Port features                 | IEEE802.3x flow control (full duplex)<br>Storm control based on port rate percentage<br>PPS/BPS-based storm contro   |
| IP routing                    | Static routing<br>RIPv1/v2 and RIPv6<br>OSPFv1/v2/v3<br>BGP and BGP4+ for IPv6   |
| Multicast                     | IGMP Snooping /MLD Snooping、Multicast VLAN   |
| SDN/Openflow                  | OpenFlow 1.3   |
| VXLAN                         | VXLAN Layer 2 switching<br>VXLAN routing switching<br>VXLAN gateway  |
| Link aggregation              | 1G/10G/40G port aggregation<br>Static aggregation/Dynamic aggregation<br>Cross-device aggregation  |
| Mirroring                     | Port mirroring<br>RSPAN<br>Traffic mirroring   |
| Stack                         | Distributed device management, distributed link aggregation, and distributed resilient routing<br>Stacking through standard Ethernet interfaces<br>Local device stacking and remote device stacking  |
| ACL                           | Packet filtering at L2~L4 Traffic classification based on source MAC addresses, destination MAC addresses, source IPv4/IPv6 addresses<br>Time range-based ACL<br>VLAN-based ACL<br>Bidirectional ACL   |
| Security                      | Hierarchical user management and password protection<br>Guest VLAN<br>802.1X authentication, centralized MAC authentication<br>RADIUS authentication<br>MAC address learning limit<br>Port isolation<br>IP Source guard<br><br>Dynamic ARP inspection, preventing man-in-the-middle attacks and ARP DoS attacks<br><br>IP/Port/MAC binding |
| QoS                           | 802.1p DSCP remarking<br><br>Flexible queue scheduling algorithms based on ports and queues, including SP, WRR, WFQ and SP+WRR<br><br>Committed access rate (CAR)<br>Packet redirection<br>Port rate limit (receiving and transmitting)  |
| Management and maintenance    | Configuration through CLI, Telnet, and console port<br>Ping, Tracert<br>Loading and upgrading through XModem/FTP/TFTP<br>SNMPv1/v2/v3 and Web-based NMS<br>Remote monitoring (RMON ) alarm, event, and history recording<br>NTP  |

▪ **Typical Application**



▪ **Available Model**

- DS-3E3728F-H
- DS-3E3728-H
- DS-3E3752-H

**Headquarters**

No.555 Qianmo Road, Binjiang District,  
Hangzhou 310051, China  
T +86-571-8807-5998  
www.hikvision.com

Follow us on social media to get the latest product and solution information.

