

DHI-ASI2212J-PW

Dahua Single Door IC Card, Password, Fingerprint, Bluetooth Access Standalone



Technical Specification

System

Main Processor	Embedded Processor
Button Type	Mechanical
Network Protocol	UDP; TCP; IPv4; P2P
OSDP Protocol	Yes
Interoperability	CGI; ONVIF
SDK and API	Yes

Basic

Product Type	Standalone
Display Screen	2.4" LCD
Screen Type	LCD
Screen Resolution	240 (H) × 320 (V)
Voice Prompt	Yes
Backlight	Yes
Casing Material	PC+ABS

Function

Verification Method	Configuration of card, remote, password, fingerprint combination unlock and multi-user combination unlock.
Unlock Mode	Card, remote, password, fingerprint combination unlock and multi-user combination unlock.
Card Type	Mifare cards (IC card)
Period List	128 periods
Holiday Period	128 periods

- 2.4" TFT display screen with a resolution of 240 × 320.
- Audio prompts.
- Supports 30,000 users, 30,000 cards, 30,000 passwords, 5,000 fingerprints, and 100,000 records.
- The security module expansion is supported to enhance security and protect against the device being opened during a power failure.
- Fingerprint/card/remote/password unlock and unlock through their combinations.
- Supports duress alarm, tamper alarm, intrusion alarm, door contact timeout alarm, illegal card exceeding threshold alarm, illegal password exceeding threshold alarm and external alarm.
- Supports guest users, patrol users, blocklist users, VIP users, general users, and others.
- TCP/IP and Wi-Fi communication; auto registration, P2P registration, and DHCP.
- Supports online update and USB update.
- Supports PoE to provide power to the access controller, and the access controller provides power to both a card reader (12 V 200 mA at most) and an electromagnetic lock (12 V, 500 mA at most).

Network Update	Yes
First User Unlock	Yes
Remote Verification	Yes
Restricted List/Trusted List	Yes
Wi-Fi	Yes
Wireless Standard	IEEE802.11b/802.11g/802.11n
Wireless Frequency range	2.4GHz
Peripheral Card Reader	1 × RS-485 card reader 1 × Wiegand card reader
Multi-user Authentication	Yes
Multi-factor Authentication	Yes
Web Configuration	Yes
Auto Registration	Yes

Performance

Card Reading Distance	0 cm–6 cm (0"–2.36")
Fingerprint Sensor Type	Optical
Fingerprint Verification Mode	1:N
Fingerprint Comparison Time	1 s

User

User (Card) Type	Normal user; VIP users; patrol users; guest user; blocklist user; other user
------------------	--

Capacity

User Capacity	30,000
Fingerprint Capacity	5,000
Card Capacity	30,000
Password Capacity	30,000
Record Capacity	100,000

Port

RS-485	1
Wiegand	1
USB	1 × USB 2.0
Network Port	1 × RJ-45 100 Mbps self-adaptive Ethernet port
Alarm Input	2
Alarm Output	2
Alarm Linkage	Yes
Doorbell	1
Exit Button	1
Door Status Detection	1
Lock Control	1

Alarm

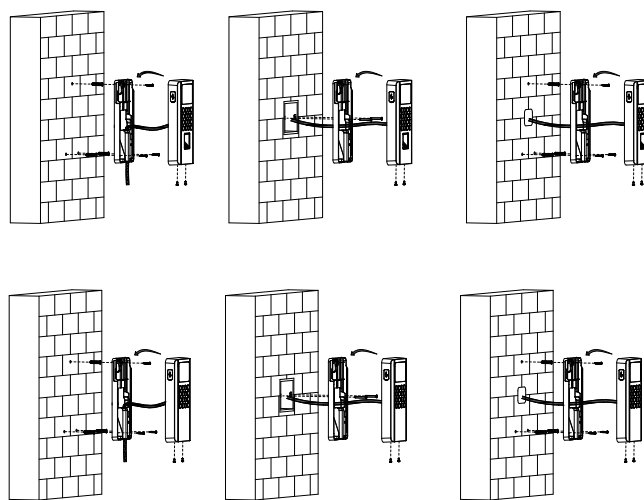
Anti-pass Back	Yes
Tamper Alarm	Yes
Duress Alarm	Yes
Door Sensor Timeout	Yes
Intrusion	Yes
Illegal Card Exceeding Threshold	Yes
Duress Fingerprint	Yes

General

Power Adapter	Optional
Power Supply	Standard PoE 12 VDC (the device can provide power to the lock)
Power Consumption	≤12 W
Product Dimensions	205 mm × 86 mm × 30 mm (8.07" × 3.38" × 1.18") (H × W × D)
Packaging Dimensions	254 mm × 131 mm × 75 mm (10.00" × 5.16" × 2.95") (H × W × D)
Operating Temperature	-10 °C to +55 °C (+14 °F to +131 °F)

Operating Humidity	0%–95% (RH), non-condensing
Operating Altitude	0 m–3,000 m (0 ft–9842.52 ft)
Operating Environment	Indoor
Gross Weight	0.45 kg (0.99 lb)
Installation	Surface Mount
Certifications	CE; FCC
Installation Angle	Straight

Installation



Dimensions (mm[inch])

