

# DH-HAC-ME1500EQ-LS

5MP HDCVI Active Deterrence Camera



\* The parameters and datasheets below can only be applied to 1500-S2 series.

\* In order to use the 5MP 16:9 HDCVI camera, the firmware of XVR must be upgraded to V4.001.0000001.0.R.200908 or later version.

- Max 25 fps@5MP (16:9 video output)
- CVI/CVBS/AHD/TVI switchable
- Active deterrence with warm light and siren
- Built-in PIR, 10 m/110° detecting range/angle
- Quick-to-install eyeball save installation time
- 3.6 mm fixed lens (2.8 mm optional)
- Max. IR length 30 m, Smart IR
- IP67, 12 V DC



## System Overview

Active Deterrence Series provides multi-dimensional system that links video with audio, information and alarm to verify potential risks. Active deterrence camera can actively warn off intruders with light and siren, alert users in real-time with alarm-over-coax, and provide visual verification with HDCVI video.

## Functions

### Active Deterrence

Active deterrence is to warn off intruders actively with white light and siren even before users are aware of the incidence. Once an intrusion is detected, the white light will turn on and the siren will buzz to alert the intruder. The white light can be set to normally on or flash, the content of siren is configurable.

### Simplicity

HDCVI technology inherits the born feature of simplicity from traditional analog surveillance system, making itself a best choice for investment protection. HDCVI system can seamlessly upgrade the traditional analog system without replacing existing coaxial cabling. The plug and play approach enables high definition video surveillance without the hassle of configuring a network.

### Smart Illumination

The camera is designed with IR illumination for best lowlight performance. Smart IR is a technology to ensure brightness uniformity in B/W image under low illumination. Dahua's unique Smart IR adjusts to the intensity of camera's infrared LEDs to compensate for the distance of an object, and prevents IR LEDs from overexposing images as the object come closer to the camera.

### 4 Signals over 1 Coaxial Cable

HDCVI technology supports 4 signals to be transmitted over 1 coaxial cable simultaneously, i.e. video, audio\*, data and power. Dual-way data transmission allows the HDCVI camera to interact with the XVR, such as sending control signal or triggering alarm. Moreover, HDCVI technology supports PoC for construction flexibility.

\* Audio input is available for some models of HDCVI cameras.

### Long Distance Transmission

HDCVI technology guarantees real-time transmission at long distance without any loss. It supports up to 700m transmission for 2MP/5MP/8MP HD video via coaxial cable, and up to 300m via UTP cable.\* \*Actual results verified by real-scene testing in Dahua's test laboratory.

### Protection (IP67, wide voltage)

IP67: The camera passes a series of strict test on dust and soak. It has dust-proof function, and the enclosure can work normal after soaking in 1 m deep water for 30 minutes.

Wide voltage: The camera allows  $\pm 30\%$  (for some power supplies) input voltage tolerance (wide voltage range), and it is widely applied to outdoor environment with instable voltage.

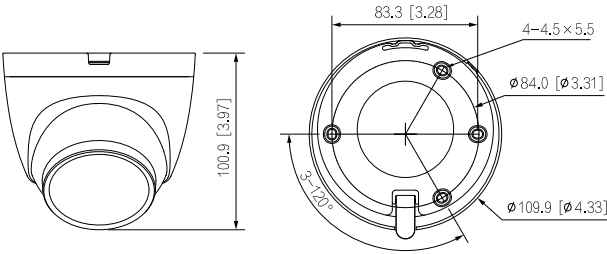
### Easy Installation

HDCVI quick-to-install eyeball adopts quick-to-install pedestal, which can achieve easier installation than conventional eyeball. Quick-to-install camera reduces time and labor costs.

Technical Specification						BLC		BLC/HLC/DWDR	
Camera						WDR		DWDR	
Image Sensor		5MP				White Balance		Auto/Area WB	
Max. Resolution		1/2.7"CMOS				Gain Control		Auto	
Pixel		2880 (H) × 1620(V)				Noise Reduction		2D NR	
Scanning System		Progressive				Smart IR		Yes	
Electronic Shutter Speed		PAL: 1/25 s–1/100,000 s NTSC: 1/30 s–1/100,000 s				Mirror		Off/On	
S/N Ratio		0.005 Lux/F1.6, 30IRE, 0 Lux IR on				Privacy Masking		Off/On (8 area, rectangle)	
Min. Illumination		> 65 dB				PIR			
Illumination Distance		30 m (98.4 ft)				Detection Mode		Pyroelectric infrared sensor	
Illuminator On/Off Control		Auto				Max. Detection Range		10 m (32.8 ft), 110°	
Illuminator Number		1 (IR light)				Recommended Installation Height		2.2 m–3 m (7.2 ft–9.8 ft)	
Pan/Tilt/Rotation Range		Pan: 0°–360° Tilt: 0°–78° Rotation: 0°–360°				Recommended Working Temperature		–10 °C to 50 °C (14 °F to 122 °F)	
Lens						Active Deterrence			
Lens Type		Fixed-focal				White Light Warning		lighting/flash; Alert Duration: 5 s–60 s; flash Freq: low/medium/high	
Mount Type		M12				Sound Warning		Audio 1/2/3; Volume: high/medium/low; duration: 5 s–60 s; 110 dB	
Focal Length		2.8 mm; 3.6 mm				Certifications			
Max. Aperture		F1.6				CE (EN55032:2015, EN61000-3-2:2014, EN61000-3-3:2013, EN55024:2010+A1:2015, EN55035:2017, EN50130-4:2011+A1:2014) FCC (CFR 47 FCC Part 15 subpartB, ANSI C63.4-2014) UL (UL60950-1+CAN/CSA C22.2 No.60950-1) IEC 62368-1:2014 (Second Edition)			
Field of View		2.8 mm: H: 113°; V: 60°; D: 132° 3.6 mm: H: 90°; V: 48°; D: 104°							
Iris Type		Fixed iris							
Close Focus Distance		2.8 mm: 1.0 m 3.6 mm: 1.5 m				Port			
DORI Distance	Lens	Detect	Observe	Recognize	Identify	Video Output			
	2.8 mm	61.2 m (200.8 ft)	24.5 m (80.4 ft)	12.2 m (40.0 ft)	6.1 m (20.0 ft)	Video output choices of CVI/TVI/AHD/CVBS by one BNC port			
	3.6 mm	77.8 m (255.2 ft)	31.1 m (102.0 ft)	15.6 m (51.2 ft)	7.8 m (25.6 ft)	Power			
Video						Power Supply		DC12 V±30%	
Frame Rate						Power Consumption		Max 4.9 W (12 V DC, IR on)	
						Environment			
						Operating Temperature		–40 °C to +60 °C (–40 °F to 140 °F); < 95% (non-condensation)	
						Storage Temperature		–40 °C to +60 °C (–40 °F to 140 °F); < 95% (non-condensation)	
Resolution						Protection Grade		IP67	
Day/Night						Structure			
						Casing		Inner core: Metal + plastic Cover: Plastic	
						Camera Dimensions		Φ109.9 mm × 100.9 mm (Φ4.33" × 3.97")	
						Net Weight		0.30 kg (0.66 lb)	
						Gross Weight		0.47 Kg (1.04 lb)	

Ordering Information		
Type	Model	Description
SMP Camera	DH-HAC-ME1500EQP-LS	5MP HDCVI Active Deterrence Fixed IR Eyeball Camera, PAL
	DH-HAC-ME1500EQN-LS	5MP HDCVI Active Deterrence Fixed IR Eyeball Camera, NTSC
Accessories (Optional)	PFA13G	Junction Box
	PFB205W	Wall Mount Bracket
	PFA152-E	Pole Mount Bracket
	PFA109	Mount Adapter
	PFB220C	Ceiling Mount Bracket
	PFM800-4K	Passive HDCVI Balun
	PFM321D	12V 1A Power Adapter
	PFM904	Integrated Mount Tester

Dimensions (mm[inch])



Accessories

Optional:



PFA13G  
Junction Box



PFB205W  
Wall Mount Bracket



PFA152-E  
Pole Mount Bracket



PFA109  
Mount Adapter



PFB220C  
Ceiling Mount Bracket



PFM800-4K  
Passive HDCVI Balun



PFM321D  
12 V 1A Power Adapter



PFM904  
Integrated Mount Tester

Junction Mount	Wall Mount	Pole Mount(Vertical)